



Enterprise Vault 12.2



VERITAS™

The truth in information.

ENTERPRISE VAULT 12.2

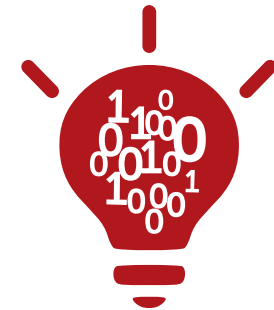
The Ultimate Archive



Cloud
Data Management



360
Data Management



Intelligent
Data Management

ENTERPRISE VAULT 12.2 MULTI-CLOUD ARCHIVING

Enabling Multi Cloud Archiving



Cloud
Data Management

Multi Cloud Archiving (Cloud Secondary Storage)

Host in AWS, Azure, IBM & Google cloud

MULTI CLOUD ARCHIVING SECONDARY STORAGE

Provide ability to migrate content to Azure Blob, Google Cloud & AWS S3 IA cloud

Move content to cloud while leveraging on-premises or IaaS

Deduplication prior to moving to the cloud

Reduce storage costs with minimal retrieval impact

New in EV12.2:

- Azure Blob (Hot & Cool)
- AWS S3 IA (S3 Standard already supported)
- Google Regional, Multi-Regional, NearLine & ColdLine
- IBM Public Cloud Object Storage



MULTI CLOUD ARCHIVING RUN IN THE CLOUD

Enhanced support for Multi Cloud Archiving in Azure, AWS & GCP

AWS, Azure & GCP promotion of IaaS

- Help customers take advantage of cloud technologies
- Provide complete deployment flexibility

(On Premises, Public/Private Cloud, VM)



MULTI CLOUD ARCHIVING HOSTED IN THE CLOUD

BlueSource EV247

- EV and eDiscovery Platform Hosted in Azure by bluesource
- FedRAMP authorized for Federal customers
- Managed solution
- Migration from on-premises available
- CAPEX becomes OPEX



ENTERPRISE VAULT 12.2 **360 DATA MANAGEMENT**

Store. Manage. Discover.



Skype for Business Archiving

Enhanced Retention Management

SMTP Message Tracking Log

All New View Message

OCR of Images in PDF & Office Documents

PST File Location Import via InfoMap

DATA 360 SKYPE FOR BUSINESS ARCHIVING

Capture Skype for Business content into Enterprise Vault



Compliance Capture Skype For Business content

- Peer to peer messages
- Conference chats

Simple Enablement

Discovery & Compliance Accelerator Support

The screenshot shows the Enterprise Vault console interface. On the left, a tree view shows the hierarchy: Console Root > Enterprise Vault > Directory on localhost > EV Preview > Targets > Skype for Business. On the right, a table lists target computers:

Target computer	Enabled	Enterprise Vault server	Retentic
SThree.Preview.lab	Yes	SFour.Preview.lab	Default

Below the table is a dialog box titled "Skype for Business Target Properties - SThree.Preview...". It has two tabs: "General" and "Archive". The "Archive" tab is active, showing the following settings:

- Skype for Business computer: SThree.Preview.lab
- Export Enabled:
- Enterprise Vault server: SFour.Preview.lab

Buttons at the bottom of the dialog are OK, Cancel, Apply, and Help.

New "IM Archiving" SKU
VERITAS

DATA 360 ENHANCED RETENTION MANAGEMENT



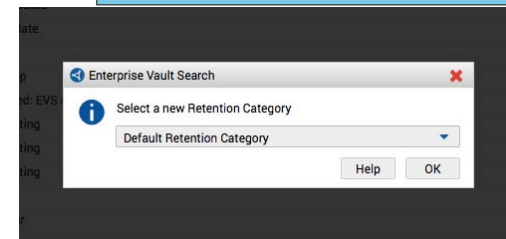
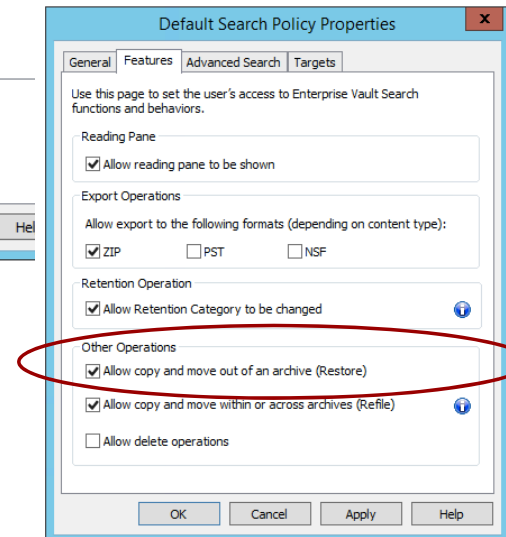
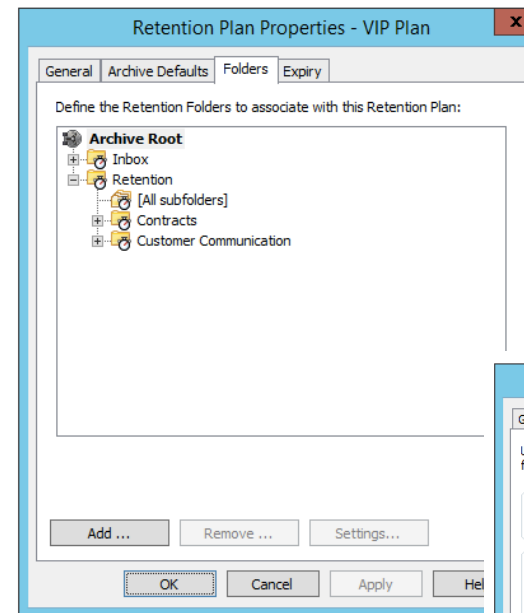
Two ways to manually change retention for an item

Retention Folders (Exchange Archives)

- Drag & Drop Retention Control for Mail Items
- Assign Retention Categories to Archive Folders
- Create Folders within an Archive

EV Search Item Change (All Archives)

- Manual Override of Assigned Record Category



Enterprise Vault Search: Change Retention Category

DATA 360 ENHANCED RETENTION MANAGEMENT



Fixed Expiry Date on Retention Categories

Choose a specific date to expire archived items

Retention Category Properties - Default Retention Ca... x

General Details Records

Choose how long to keep items that have this retention category.

Retention

Period: 6 Years
Start date: Inherit from Site settings

Fixed expiry date: 07/08/2017

Retain items forever

August 2017

Mon	Tue	Wed	Thu	Fri	Sat	Sun
31	1	2	3	4	5	6
7	8	9	10	11	12	13
14	15	16	17	18	19	20
21	22	23	24	25	26	27
28	29	30	31	1	2	3
4	5	6	7	8	9	10

Settings

Prevent automatic deletion of expired items with this category
 Prevent user deletion of items with this category

Today: 03/02/2017

OK Cancel Apply Help

DATA 360 ENHANCED RETENTION MANAGEMENT

Enhanced End-User Expiry Report



Expiry Report in EVSearch

View

- Expiry Date
- Number of Days Until Expiry
- Retention Category

Action

- Change Retention Category

Expiry Report Embedded within Outlook

The screenshot shows the Outlook interface with the Enterprise Vault Search window open. The search results are filtered to show items that will expire within 60 days. The table below lists the search results:

From	Subject	Expiry Date	Days to Expire	Retention Category
a.howard@enron.com	RE: TW forecast	1/31/2017 0:00	-2	Default Retention Category
steven.harris@enron.com	RE: TW forecast	1/31/2017 0:00	-2	Default Retention Category
a.howard@enron.com	TW forecast	1/31/2017 0:00	-2	Default Retention Category
a.howard@enron.com	RE: TW Business Plan Draft	1/31/2017 0:00	-2	Default Retention Category
a.howard@enron.com	RE: updated Transwestern model	1/31/2017 0:00	-2	Default Retention Category
lindy.donoho@enron.com	RE: updated Transwestern model	1/31/2017 0:00	-2	Default Retention Category
denis.tu@enron.com	RE: TW Business Plan Draft	1/31/2017 0:00	-2	Default Retention Category
mlb.lisley@enron.com	TW Order 637 Filing	1/31/2017 0:00	-2	Default Retention Category
announcements.enron@enron.com	Astros Baseball Tickets	1/31/2017 0:00	-2	Default Retention Category
e.sosenberg@enron.com	Another spot that might be of some use	1/31/2017 0:00	-3	Default Retention Category
i.esenstam@enron.com	Updated: Britt Motor Conf Call	1/31/2017 0:00	-3	Default Retention Category
denis.tu@enron.com	FW: A TW omission	1/31/2017 0:00	-3	Default Retention Category
newsetter@rgzone.com	BIQZONE Industry News	1/31/2017 0:00	-2	Default Retention Category
lindy.donoho@enron.com	RE: Suggestion - Bed Bugs	1/31/2017 0:00	-2	Default Retention Category
executive.office@enron.com	Management Changes	1/31/2017 0:00	-2	Default Retention Category
denis.lee@enron.com	RE: TW CBS Production Contract	1/31/2017 0:00	-2	Default Retention Category

The email preview for "Astros Baseball Tickets" is shown below the table. It includes the following text:

From: announcements.enron@enron.com
Sent: 3/21/2002 9:45
To: @iga.at.enron.houston@enron.com

Houston Astros Baseball season tickets are available sale to employees at their face value. The seats range in price from \$2,450 to \$3,237 for the season, and are located in the box and club levels.

If you're interested in being on the list of potential buyers for Enron's season tickets to the Astro's 2002 home games, please indicate your interest by AFM, Central Time on Thursday, March 21 via e-mail to Elizabeth Linnell. In your e-mail, please indicate the number of seats you're interested in purchasing for the full season (no partial season or individual games). Once the number of interested potential buyers is determined, we'll know whether a lottery process will need to take place to fairly allocate the purchase opportunities and will communicate that to respondents.

Please note that the season begins on Friday, March 29 so payment for the tickets will need to be made early next week.

If you have any questions, please call Elizabeth Linnell at x3396 or Rachel Tobor at x31481.

EnronData.org (<http://enrondata.org>)
Reference Enron Datasets

DATA 360 SMTP MESSAGE TRACKING

Detailed record of all mail flow through the SMTP Service



Use the Message Tracking log for

- Message Forensics
- Mail Flow Analysis
- Reporting
- Troubleshooting

Simple Enablement

Choice to log Subjects

unid	qid	msgid	subject	mta	size	sender	submit-time
WFjORgAW5JUA	msg.00000-0	<26cd844b-9118-4d61-9cc2-0447bbf58372@journal.	report.generator>	pl4envgen.pl4.puneperf.local	12639	USR_00536@orange.local	Message
Tracking location 1	1999-01-01-00.04.56						
WFjOSA AW5DoB	msg.00000-0	<278931d9-0e35-4d5f-85f7-2609401a412f@journal.	report.generator>	pl4envgen.pl4.puneperf.local	14927	USR_00342@orange.local	Message
Tracking location 2	1999-01-01-00.12.20						
WFjOSA AW5DoC	msg.00000-0	<35d46bdc-d55d-4a7f-a28b-0dc49c5bbc77@journal.	report.generator>	pl4envgen.pl4.puneperf.local	14248	USR_00588@orange.local	Message
Tracking location 3	1999-01-01-00.14.48						
WFjOSA AW5DoD	msg.00000-0	<d439a301-6e56-48bf-92c5-617c2ea8d551@journal.	report.generator>	pl4envgen.pl4.puneperf.local	18724	USR_00801@orange.local	Message
Tracking location 4	1999-01-01-00.17.17						
WFjOSA AW5DoE	msg.00000-0	<ae0ac8f0-d6fb-46fc-955b-fe8fadadb6a5@journal.	report.generator>	pl4envgen.pl4.puneperf.local	13529	USR_00136@orange.local	Message
Tracking location 5	1999-01-01-00.19.45						
WFjOSA AW5DoF	msg.00000-0	<c164b992-1c82-46cd-87b3-f9733d62f3b9@journal.	report.generator>	pl4envgen.pl4.puneperf.local	17403	USR_00787@orange.local	Message
Tracking location 6	1999-01-01-00.22.13						
WFjOSA AW5EAG	msg.00000-0	<6064fe24-8b10-43c9-8d84-457a90cbe0c2@journal.	report.generator>	pl4envgen.pl4.puneperf.local	15042	USR_00230@orange.local	Message
Tracking location 7	1999-01-01-00.24.41						
WFjOSA AW5EAH	msg.00000-0	<820dda7d-5569-401e-8e3f-8d1d25e2b3bf@journal.	report.generator>	pl4envgen.pl4.puneperf.local	12035	USR_00487@orange.local	Message
Tracking location 8	1999-01-01-00.27.09						
WFjOSA AW5EAI	msg.00000-0	<c7544dc-d-3093-440d-8e2f-e0be1288dccc@journal.	report.generator>	pl4envgen.pl4.puneperf.local	19755	USR_00604@orange.local	Message
Tracking location 9	1999-01-01-00.29.37						
WFjOSA AW5EAJ	msg.00000-0	<8f46a2e8-B9d3-40B3-9c4f-ec647f877e31@journal.	report.generator>				Message

DATA 360 ALL NEW VIEW MESSAGE

Enhanced End-User Experience when viewing archived messages

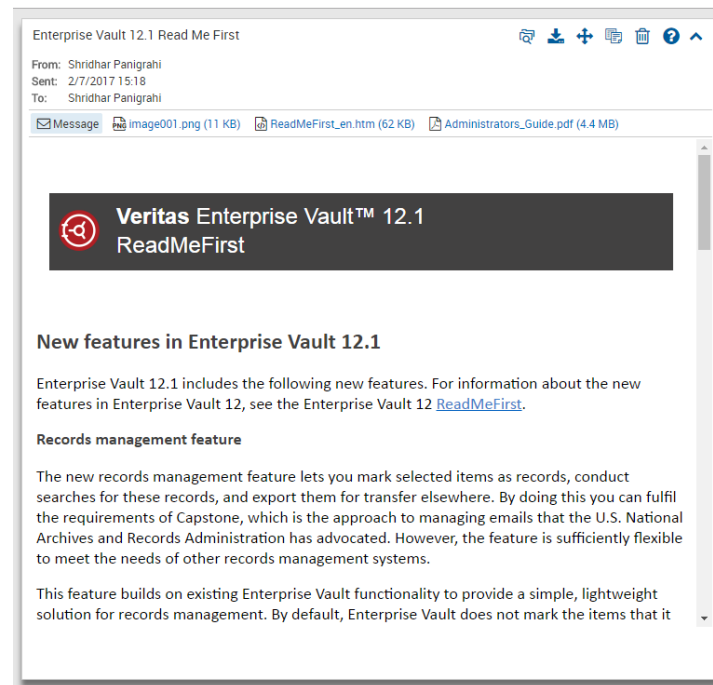


Updated Look & Feel

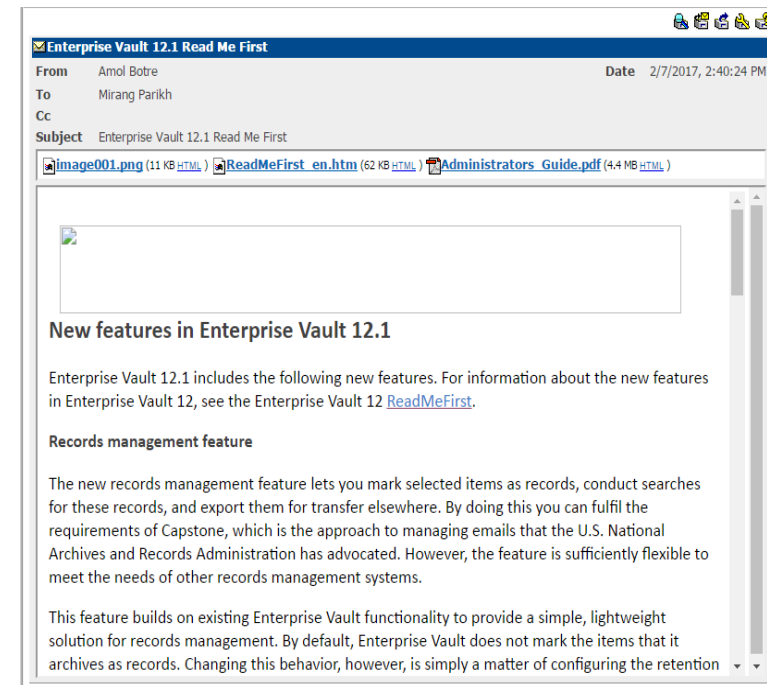
Inline Images

View Attachments
(without Download)

EV12.2



Pre-EV12.2



DATA 360 IMAGE OCR

Enhanced Image Optical Image Recognition

OCR of Images in PDF Files and Office Documents



DATA 360 LOCATE PSTS WITH INFOMAP AND DRIVE EV INGESTION

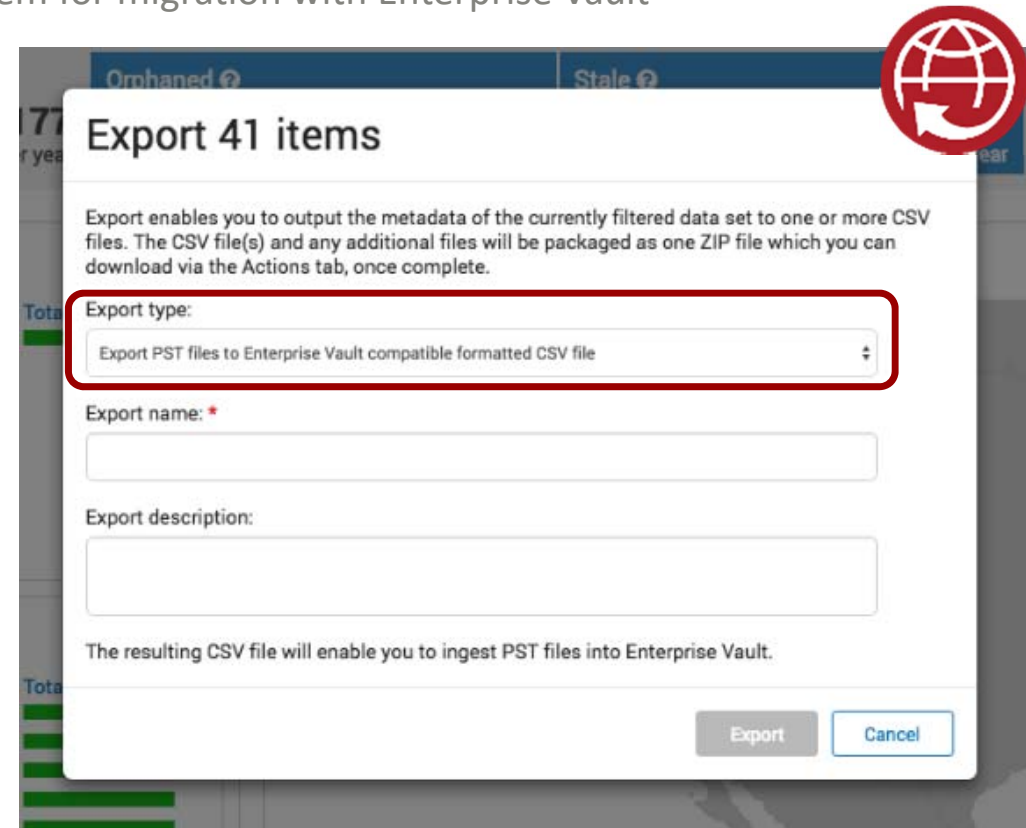
Quickly locate PST files using Information Map & prepare them for migration with Enterprise Vault

Discover PST files via InfoMap

Any PST file protected by NetBackup, can be discovered and made available for migration in minutes

Export identified PST files to an EV compatible CSV file

Import into EV PST migration process



Orphaned 0 | State 0

Export 41 items

Export enables you to output the metadata of the currently filtered data set to one or more CSV files. The CSV file(s) and any additional files will be packaged as one ZIP file which you can download via the Actions tab, once complete.

Export type:
Export PST files to Enterprise Vault compatible formatted CSV file

Export name: *

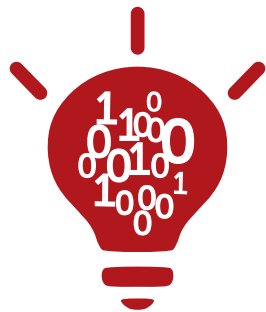
Export description:

The resulting CSV file will enable you to ingest PST files into Enterprise Vault.

Export Cancel

ENTERPRISE VAULT 12.2 INTELLIGENT DATA MANAGEMENT

The Intelligent Archive



Intelligent
Data Management

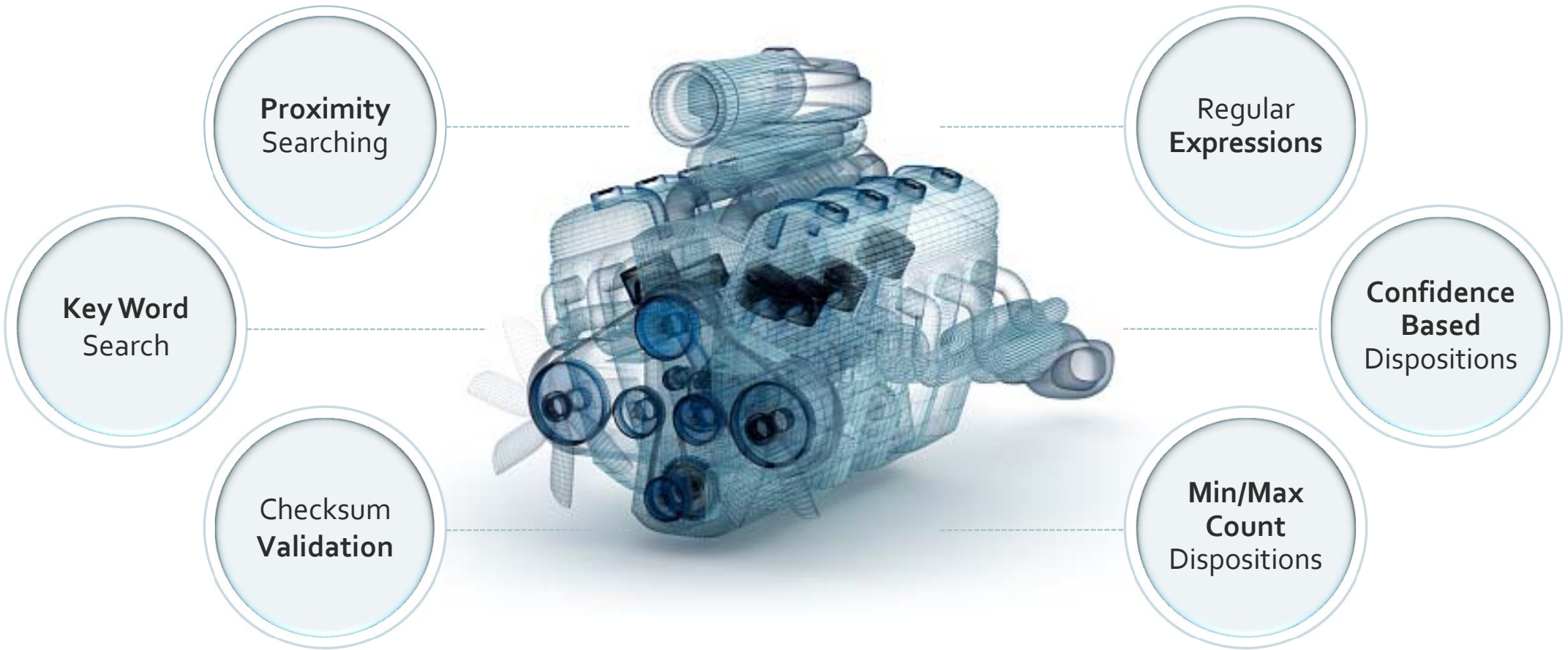
Veritas Information Classifier (Next Gen)

Relationship Analytics Connector

Archive Discovery Search Service

INTELLIGENT POWERFUL AND PERFORMANT ENGINE

Next Generation Classification using common Veritas solution



INTELLIGENT DEFAULT POLICIES AND PATTERNS

Policies and patterns available by default and updated as needed

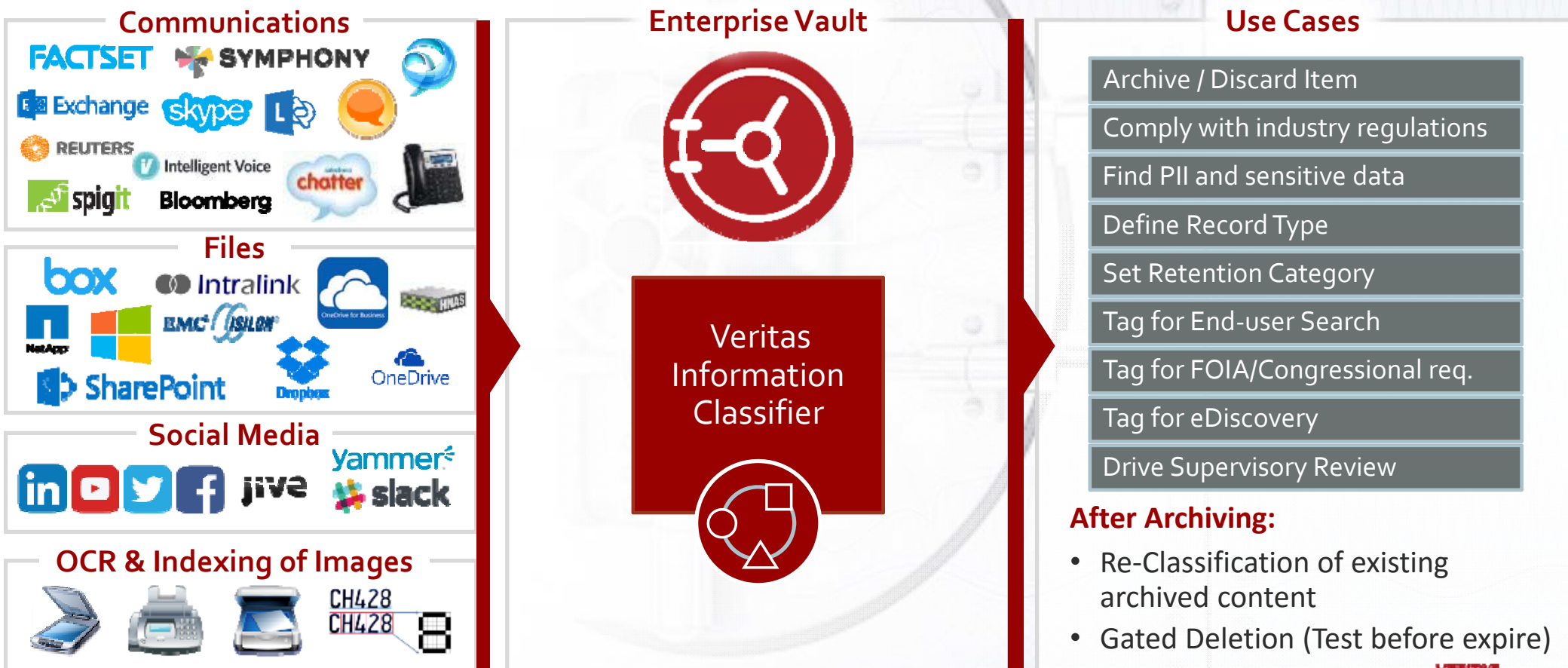
Create new policies and copy/modify provided policies

Test new policies/pattern with hit-highlighting



INTELLIGENT Enterprise Vault Classification USE CASES

Classification of all content sources drives retention, supervision and discovery



INTELLIGENT RELATIONSHIP ANALYTICS CONNECTOR

Extract business value from archived content

Enabling additional Value from your Archive

- Joint TrustSphere solution in Market Today!
- Partner solutions
- SDK for 3rd Party Analytics VTPP Partners

Access archive metadata to solve three main use cases:

- Sales Optimization
- HR Analytics
- Insider Threat detection



New "Archive Analytics" SKU

VERITAS™

INTELLIGENT: EV ANALYTICS CONNECTOR

Extract business value from archived content

Use Machine Learning with EV Classification & Analytics output files to:

- Extract more value from archived data
- Find correlation between archived data and transactional data
- Identify trends and take action

Use home grown tools or cloud tools such as Amazon ML and Amazon Lambda to pre-process Analytics files

```
cllf:Inbox
locn:Inbox
crn:SMTP Journaling
adat:2017-07-26T00:39:00Z
cpnm:Veritas SMTP Archiving
archiveid:12311F8920359074D9CE037E3FB4BCBE91110000ev
pvid:1DEE2D93388A55E42BA66C827062B0BE01110000ev
ssid:201707261029590~200202191509050000~Z~009F730B8CA7E2B0723BD7D307D26071
nrpc:1
rtea:windsorhotel@nzbnbhotels.com
rtdn:windsorhotel@nzbnbhotels.com
auea:b..sanders@enron.com
audn:b..sanders@enron.com
Vault.MsgType:SMTP.Mail
Vault.MsgDirection:3
Vault.PolicyAction:NOACTION
evtag.category:Credit-Card
evtag.category:PCI-DSS
evtag.category:PII
evtag.category:US-FFIEC
evtag.category:US-FISMA
evtag.category:US-MA-201-CMR-17
evtag.cfp:VIC:NfROnoB4vLHtOrFLrBiuZesje0HB695CeZ0AZzrI9XQ=
fpdd:1C62A2BEF0CF4E9951F60D774E6A1C67B36F8B72AA6107C6AB3C2DCB8047F34618s39B
fpcn:1S5619667208A548251D2454EFC5EF61E31892511646B0CB762968B58C56152A11s32D
subj:booking/enquiries from nzbnbhotels
iden:<26569929.1075861022796.JavaMail.evans@thyme>
msgc:IPM.Document.Outlook.File.eml.15
cnid:FA4153CBDABC445F815FD63FB9E76904
impo:1
sens:0
prio:0
cnhv:01D305AA40C5FA4153CBDABC445F815FD63FB9E76904
date:2002-02-19T15:09:05Z
mdat:2002-02-19T15:09:05Z
size:2
dtyp:EML
cont:I would like to book a room w/ 2 beds for Thurs the 21st. I have inquired on the NZ bed and
breakfast website but cannot get to the reservation desk. My Visa # is ██████████ exp
11/03. Can you confirm a reservation?
natc:0
```

INTELLIGENT ARCHIVE DISCOVERY SEARCH SERVICE

Provide ability for customers to access EV content with supported Third-Party eDiscovery solutions

- Enable Integration with Third-party discovery solutions via new API
- Performant & will not inhibit EV performance
- Licensed via existing Archive Discovery SKU
- Approved Partner access via VTPP

Requires "Archive Discovery" SKU

VERITAS™